

Starting School



# Applying for a place at Secondary School to start in September 2023

## Information for Parents

Please note that the information is what has been published thus far (as of 9<sup>th</sup> May 2022)

# General Information about all secondary schools

- The first part of this presentation is about general admission arrangements and I will talk about local high schools but not grammar schools during this section.
- The second part of this presentation will specifically cover grammar school application, which requires your child to sit an examination, and therefore may not be relevant to everyone.
- If you think of a question at any time, please do interrupt. I will answer these as we go along.

# Where can I find further information?

- 'Trafford MBC' website and follow the links to School Admission pages
- Individual secondary school websites – look for 'Year 7 Admissions 2023' – when this appears
- Each secondary school website
- Me!



# Introduction

- The transfer from primary to secondary school is an important milestone in the life of your child.
- For most children, the transfer to secondary school will be a straightforward process. Some parents, where personal circumstances are different, might need more complex and detailed advice.
- The School Admissions Team in Trafford is always available to give help and realistic advice.
- Trafford Local Authority (LA) is responsible for processing applications for transfer to secondary school, for all its residents, for any state funded secondary school, including academy schools and free schools.
- If you do not live in Trafford, then you will apply to your 'home Authority'.

# Finding out about a secondary school



- All state funded schools are required to provide information about themselves on their websites.
- Each school must publish certain things such as their most recent Ofsted Report and their examination performance.
- It is also a must to visit the schools which interest you before applying and I hope you will take the opportunity to visit your local area schools along with any others you might like to consider with your child.
- Friends and neighbours can also be a source of very useful up-to-date information.

# How do I contact Trafford School Admissions?

- **WRITE**

- You can write to us at the following address:

School Admissions

Waterside House

Sale

M33 7ZF

- **TELEPHONE**

- You can telephone School Admissions on the following number:
- 0161 912 5007 or 0161 912 5080

- **E-MAIL**

- You can send an e-mail to: [school.admissions@trafford.gov.uk](mailto:school.admissions@trafford.gov.uk)



# How do I contact Manchester School Admissions?

- You can contact the Integrated Admissions Team by:

- **Telephone:** 0161 245 7166

- **Email:** [school.admissions@manchester.gov.uk](mailto:school.admissions@manchester.gov.uk)

- **Web:** [www.manchester.gov.uk/admissions](http://www.manchester.gov.uk/admissions)



# Application Procedure

- In the autumn term of the offer year all parents of Year 6 children will be invited to submit an application. Information on how to apply will be sent to all parents of pupils resident in Trafford, at their home address.
- An advertisement will be placed in the local press inviting parents who are resident in Trafford whose children may not currently be attending a Trafford primary school to submit an application.
- Information will be sent to all parents by the early Autumn Term in the offer year and they will be asked to submit their Common Application Form by **31<sup>st</sup> October 2022**, thereby ensuring that all parents have the statutory six week period in which to express their preferences.
- Parents can submit up to **five** preferences.
- Parents will be invited to name their preferred schools, ranked in order of preference. It will be made clear that parents should express a preference for all schools, wherever they are located, where they wish their child to be considered for a place.



# Application Procedure continued

- Where your child is eligible to be granted admission to more than one school a place will be allocated at whichever of those schools is ranked highest by the parent.
- Where your child is resident in the Trafford area any determination granting or refusing admission to a school will be sent direct to the parent.
- Where the child is resident in a different local authority's area, Trafford will notify that authority "the home authority" of their determination. The home authority will then notify the parent.
- Please ensure you consider all types of secondary school (High and Grammar), before you make your selections. Be both aspirational and pragmatic.

# Application Procedure continued

- Where any Trafford resident child cannot be allocated a place at a preferred school, Trafford will allocate a place at the nearest eligible school with a vacancy.
- At this stage in the allocations process, any applications submitted **after 31<sup>st</sup> October 2022** will be processed and places will be allocated in line with the published criteria.
- On the national offer day for secondary school places – **1<sup>st</sup> March 2023**, (where 1<sup>st</sup> March is not a working day, the prescribed day is the next working day) – Trafford local authority, as the home authority, will communicate to all parents resident in its area any determination granting or refusing admission.

# Review Process

- The offer letter will advise parents that they must inform Trafford local authority of their acceptance of the place by **15<sup>th</sup> March 2023** (or next working day).
- Parents will be invited to apply for any vacancies that may arise, by **15<sup>th</sup> March 2023** (or next working day).
- At this stage in the review process, any applications received **after** the closing date of **15<sup>th</sup> March 2023** will be considered in light of any remaining vacancies and places will be allocated in line with the published criteria.

# Right of Appeal

- Where an offer of a place at a preferred school cannot be made, parents will be advised of the right to appeal to an independent appeal panel. Appeals relating to applications made in the normal admissions round must be heard within 40 school days of the deadline for lodging appeals.



# Waiting Lists

- Each admission authority must maintain a clear, fair and objective waiting list for at least the first term of the academic year of admission. Each added child will require the list to be ranked again in line with the published oversubscription criteria. Priority must not be given to children based on the date their application was received or their name was added to the list. Children allocated a place in accordance with a Fair Access Protocol take precedence over those on a waiting list.





# The Schools most of our children move to are:

- Sale High School <https://salehighschool.org.uk/>
- Sale Grammar School <https://www.salegrammar.co.uk/>
- Altrincham College <https://www.altrinchamcollege.com/>
- Stretford Grammar School <https://www.stretfordgrammar.com/>
- Altrincham Grammar School for Girls <http://www.aggs.trafford.sch.uk/>
- Altrincham Grammar School for Boys <https://www.agsb.co.uk/>

# Sale High School Admissions

- All applications are made to the home Local Authority (LA) where the child lives.
- Parents of pupils outside Trafford LA can apply for a place at Sale High School using the application form provided by their 'home LA.'
- The priority catchment area for Sale High School is all postcode areas within M33, WA14, WA15 and M32. They also welcome children from postcode M23 and from other postcodes, when there are vacancies.



# Sale High Admissions Criteria – Note this is Information from 2021

- Where applications for admission exceed the number of places available, the following criteria will be applied, in the order set out below.

1. 'Looked after Children' both currently and previously (as defined in the Education Act 2002 – Admissions).
2. Siblings: children who have brothers and sisters enrolled at this school at the time of admission (September 2022) and live within the priority catchment area.

Siblings are defined as half / step / adopted / foster brothers or sisters, and any other children who are living at the same address as part of the same family unit.

3. All other applicants living within the priority catchment area
4. Siblings: All other children who have brothers and sisters enrolled at this school at the time of admission (September 2022) who live outside the priority catchment area.
5. All other applicants outside the catchment area.

# Altrincham College Admissions

- All applications are made to the home Local Authority (LA) where the child lives.
- Parents of pupils outside Trafford LA can apply for a place at Altrincham College using the application form provided by their 'home LA.'
- The priority catchment area for Altrincham College is all postcode areas within M33, WA14, WA15 and Trafford residents within M32.

# Altrincham College Admissions Criteria –

## Note this is Information from 2021

Where the number of applicants for admission exceeds the number of places available, the following criteria will be applied, in the order set down, to determine how the places are awarded:

1. Looked after children and children who were previously looked after
2. Children of parents who have been directly employed by Altrincham College either for two or more years at the time at which the application for admission is made, or to fill a vacant post for which there is a demonstrable skill shortage.
3. Siblings: Children who have brothers and sisters enrolled at this school at the time of admission and live within the priority catchment area.
4. All other applicants living within the priority catchment area.
5. Siblings: All other children who have brothers and sisters enrolled at this school at the time of admission who live outside the priority catchment area.
6. All other applicants outside the priority catchment area.

Any Questions?



# Grammar School Application

- All grammar schools require your child to sit and ‘pass’ an examination before a place may be offered.
- In order for them to sit the exam, you need to apply to the grammar school of your choice for your child to sit the exam – they can’t just turn up and take it.
- Fortunately all the local grammar schools use the same examination on the same day.
- You can apply for any number of these schools and your child will only sit the one examination in the secondary school of your choice (for our children that has always been Sale Grammar School).

# Which Grammar Schools does this relate to?

- Altrincham Grammar School for Girls
- Altrincham Grammar School for Boys
- Sale Grammar School
- Stretford Grammar School
- Urmston Grammar School

# Grammar School Admission Timetable

- **Monday 9<sup>th</sup> May 2022** - Application Form available to complete online. All correctly completed Application Forms will be acknowledged by e-mail within 48 hours by the processing centre NOT the school.
- **NOON Friday 24<sup>th</sup> June 2022 – Closing Date for ALL Applications.** Early application is recommended including submission of all documentation requesting access arrangements.
- **Note a date in June 2022** when any information, SEND reports, or other documents that you wish to be considered prior to testing must be submitted.
- **Between 9<sup>th</sup> May and 24<sup>th</sup> June 2022** you will receive confirmation of your correctly completed application form within 48 hours of submission. Please ensure you receive this before the 24<sup>th</sup> June 2022.

# Grammar School Admission Timetable continued – Virtual Open Evenings via their school website

- **Thursday 12<sup>th</sup> May 2022 (5 – 7.30 pm)** - Altrincham Grammar School for Boys
- **Wednesday 22<sup>nd</sup> June 2022 (4 – 8 pm)** – Urmston Grammar School
- **Thursday 23<sup>rd</sup> June 2022 (4 – 8 pm)** - Altrincham Grammar School for Girls
- **Thursday 30<sup>th</sup> June 2022 (5 – 8.30 pm)** – Stretford Grammar School
- **Thursday 14<sup>th</sup> July 2022 (5 – 8.30 pm)** - Sale Grammar School



# Grammar School Admission Timetable continued

- **By Friday 9<sup>th</sup> September 2022** - Final details for the examination will be sent out via email – these will include information advising arrival time and venue. An attendance slip – this **MUST** be brought to the exam with a photograph attached and stamped by the applicant's primary school. You will also receive a Special Circumstances Form. If you feel that your child may not be able to do as well in the exam as you might normally expect due to a variety of reasons, then you are **strongly** advised to complete this form and return it to the test centre school. You will also receive directions to the test centre.
- **Tuesday 13<sup>th</sup> September 2022** - Final details should have now been received by all candidates. If NOT, please contact the secondary school immediately to arrange collection. **Do not contact the school prior to this date.**

# Grammar School Admission Timetable continued

**Monday 19<sup>th</sup> September 2022 – ENTRANCE EXAM DAY.**

- **If your child is ill on the day please do not bring him/her to the test.** In this case, please forward to the School where your child is sitting the test, a Special Circumstances Form together with a Doctor's note (if available) and any supporting documentation by 12 noon on Thursday 22nd September. An alternative assessment date will be arranged.
- Please also notify the secondary school if there are **special circumstances** which could have affected your child's performance on the day of the test by this date.

# Grammar School Admission Timetable continued

- **Prior to 31<sup>st</sup> October 2022** - Test Results made available to parents. A successful result does NOT guarantee a place. Please refer to each of the Consortium School's Admissions Policy for further details.
- **31<sup>st</sup> October 2022** - The Common Application Form (CAF) must be returned to the home Local Authority by this date. If you wish your child to be considered for a school you MUST put the school in order of preference on your LA Common Application Form by the closing date stated by your Local Authority.
- **1st March 2023 (or next working day)** - National Allocation Day. All candidates will be informed by their Local Authority which secondary school they have been allocated.
- **15th March 2023** - Acceptance for initial school offers. If your child has been offered a school the acceptance of places must be received by your Local Authority by this date.

# Familiarisation Material

- <https://www.salegrammar.co.uk/159/school-admissions>
- Comprehension Familiarisation
- Maths Familiarisation
- Non Verbal Reasoning Familiarisation
- Word Choice Familiarisation

# Answer Sheet

## Selective School Assessment for 2022 Entry



Exam No: \_\_\_\_\_ DJE Number: \_\_\_\_\_  
Name: \_\_\_\_\_ Gender: \_\_\_\_\_  
Date of Birth: \_\_\_\_\_ Date of Test: \_\_\_\_\_  
Current School: \_\_\_\_\_  
Venue: \_\_\_\_\_  
Session: \_\_\_\_\_

Please write your name here:

Do not write outside the box.

### Instructions

1. Check that you are marking the answer for the correct question number.
2. Mark ONE answer only for each question on this answer sheet.
3. Use an HB pencil and rub out any errors thoroughly.

Remember, you **must** mark the answers the **RIGHT** way like this:  For example,

### Comprehension

Examples [page 2](#)

I

II

Questions [page 4](#)

1

[page 5](#)

2

3

4

5

[page 6](#)

6

7

### Word Choice

Examples [page 12](#)

I

II

Questions [page 13](#)

1

2

3

4

5

6

7

[page 14](#)

8

### Pictures 1

Examples [page 18](#)

I

II

Questions [page 20](#)

1

2

3

[page 21](#)

4

5

6

[page 22](#)

7

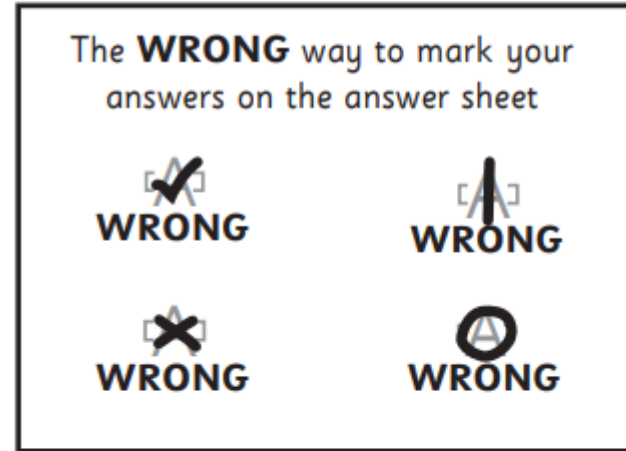
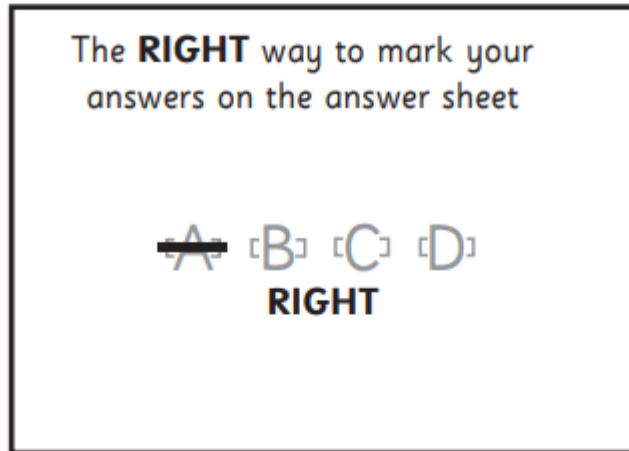
An answer sheet  
will look like this.

## Take care!

If you miss out an answer, remember to leave a gap and mark your next answer on the correct line.

### Remember:

- In the real test, you will be given a separate answer sheet for each question booklet.
- You **DO NOT** mark your answers in the question booklet. Following the real test, a computer is used to mark your answer sheets, your question booklets will not be marked, so it is not a good use of your time to be writing answers into the question booklets.
- Mark your answers carefully with one straight line, using a pencil



- Mark only one answer on each line.
- If you don't know an answer, move-on, but take care to mark your next answer on the correct line.
- If you make a mistake, or change your mind, rub-out your answer carefully and clearly mark the new answer.

# Comprehension



## Discovering Japan

Japan is an exciting and beautiful country which is situated in the Far East, off the Chinese coastline. It is found within a group of islands that are referred to as the 'ring of fire'. These are a series of active volcanoes, in a horseshoe-shaped formation, lining the edge of the Pacific Ocean. Seismic activity results in frequent earthquakes, to the extent that Japanese children require special drills at school to teach them how to keep safe in such an event. The earthquakes are not the only danger. The shockwaves often cause dangerous tsunamis (gigantic waves) that can literally wash a whole village away. This volcanic activity, however, has shaped Japan's stunning natural landscape. The nation sprawls across four large islands and over several thousand smaller ones. These islands are characterised by towering snow-capped mountains, smouldering volcanoes, heavenly lakes and thick, dense forests. Whilst the climate is as temperate as Europe, the region is often hit by intense typhoons which can be powerful enough to tear up trees and destroy buildings. Beautiful though this landscape is, the unforgiving nature of the environment makes much of it uninhabitable, forcing the population of Japan to squeeze into densely populated cities.

Tokyo is the capital of Japan (replacing the former capital, Kyoto) and is a global economic powerhouse with an annual spending power of over one trillion US dollars. Home to over 35 million people, it is referred to as a 'megapolis' and is a very densely populated city. It is also one of the world's safest cities, with very low crime rates. This is because the Japanese have a strong sense of community and sharing, where equality and good deeds are prized above getting rich. From afar, the view of Tokyo is dominated by huge, modern, quake-resistant skyscrapers and people travel around the city using a sophisticated network of subways, overhead trains and superfast monorails. Amazingly, Tokyo has been almost completely rebuilt twice in the last century due to earthquakes and warfare.

Japan is famous for leading the world in scientific and technological developments, particularly in fields such as motoring, electronics and robotics. Japan owns more than half of the world's robotic creations (most of which assist in factories), even developing human-like models that speak with mechanical voices. Engineering is another field of expertise for the Japanese. Tokyo, for instance, has been built to be as earthquake-proof as possible. Buildings shake from side to side rather than collapsing, preventing damage in the event of earthquakes. Space exploration is also a national goal, and plans to go to the planets Mercury and Venus, as well as to build a base for humans on the moon, are currently in development.

Japanese culture is also popular with western audiences. Manga, for example, is a type of comic book with colourful, imaginative stories that are popular with all ages. Related to this is anime, a type of Japanese cartoon programme based on the stories from manga. Even elements of Japan's history feature in western films and literature. Characters based on samurai warriors and deadly ninjas are becoming increasingly popular with western writers. Finally, Japanese martial arts, such as karate, kendo and judo are now practised around the world. These are popular because of their focus on the strength of the mind as well as the strength of the body.

From its powerful, natural landscape and modern super-cities to its visions of space travel and modern robotics, Japan truly is a fascinating country of contrasts. Its technological, scientific and cultural achievements have helped shape the modern world into what it is today and will no doubt continue to do so for many years to come.

---

**3** Which natural hazard do Japanese school children receive special drills in?

- A Typhoons
- B Earthquakes
- C Volcanic eruptions
- D Tsunamis

---

**4** What does paragraph 1 mean when it refers to 'seismic activity'?

- A Activity caused by intense weather and storms
- B Activity caused by gigantic waves and tsunamis
- C Activity caused by volcanoes, earthquakes and shockwaves
- D Activity caused by climate change

---

**5** Which of the following is **NOT** a hazard affecting the country of Japan?

- A Earthquakes
- B Tsunamis
- C Intense typhoons
- D A temperate climate

**22** According to the passage, which of the following are now popular in Europe thanks to Japanese culture?

- A** Space travel, talking robots and fast cars
  - B** Manga, martial arts and anime
  - C** Manga, anime and robotics
  - D** Martial arts, space exploration and engineering
- 

**23** What is the relationship between manga and anime?

- A** One is based upon the other.
  - B** Both originated outside of Japan.
  - C** They are both types of Japanese books.
  - D** They appeal only to people in Japan.
- 

**24** According to the passage, which elements of Japanese history have influenced European culture?

- A** The destruction and re-construction of Tokyo
  - B** The natural disasters that often devastate Japanese islands
  - C** Japanese military history and the samurai warriors
  - D** Samurai warriors and ninjas
- 

**25** What does the final paragraph mean by 'Japan truly is a fascinating country of contrasts'?

- A** It has beautiful countryside and dense urban areas.
- B** People can travel around in a variety of ways.
- C** People can enjoy both manga and anime.
- D** Volcanoes are beautiful but deadly.

# Mathematics

- 1** Alex has 92 DVDs. 12 belong to his brother, 5 to his father and 7 to his best friend. The rest belong to Alex.

How many DVDs does Alex own?

---

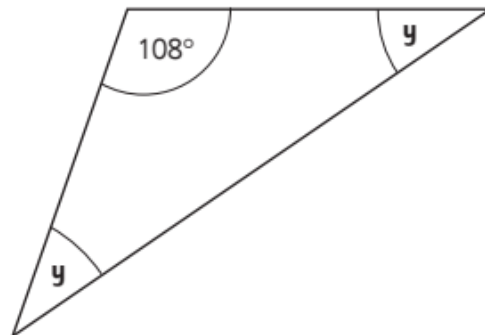
- 2** Sean takes a pie out of the freezer. The temperature of the pie is  $-4^{\circ}\text{C}$ . After 2 hours, the temperature of the pie is  $9^{\circ}\text{C}$ .

What is the change in temperature in  $^{\circ}\text{C}$ ?

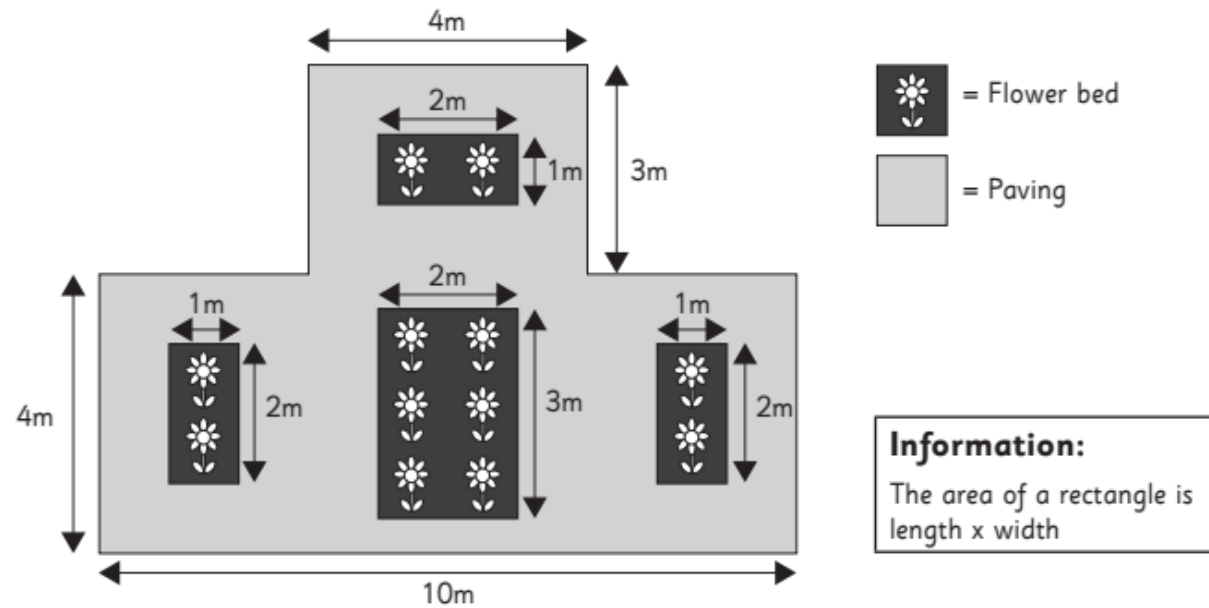
---

- 3** Both angles labelled **y** are the same size.  
What is the size, in degrees, of one of the angles labelled **y**?

**Information:** The angles in a triangle add up to  $180^{\circ}$

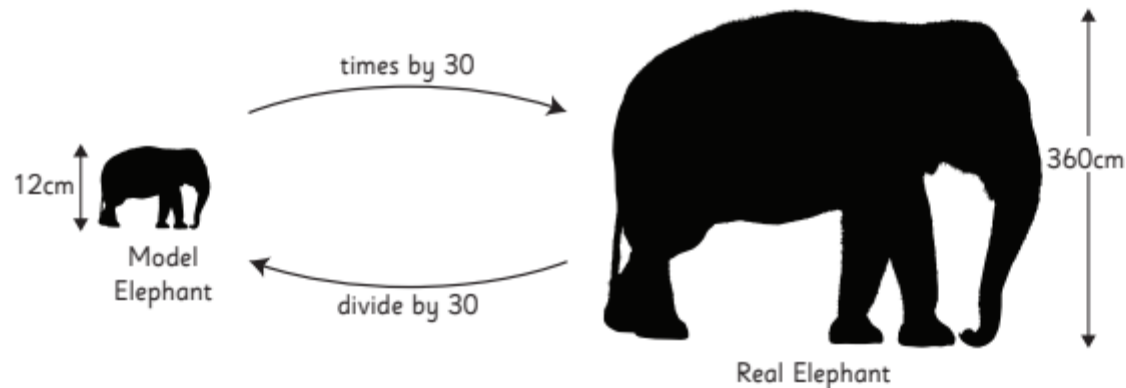


In a park there is a paved area containing some flower beds as shown below.



- 4 What is the total area, in  $\text{m}^2$ , of the flower beds?
- 5 What is the total distance, in metres, around the outside edge of the paving?
- 
- 6 Stanley sells programmes at a football match for £7 each. The organisers promise to pay him 10% of the cost of each programme he sells. Stanley sells 120 programmes.  
How many pounds should the organisers pay him?

**Information:** 1 metre (m) = 100 centimetres (cm)



### Example

Harry collects animals for his model zoo. The scale of his model is 1:30. This means that a model elephant that is 12cm high is based on a real elephant that is 360cm high.

(  $12 \times 30 = 360$  and  $360 \div 30 = 12$  )

**19** A model lion is 7.5cm long. What would be the length of a real lion?

A	B	C	D	E
150cm	175cm	210cm	215cm	225cm

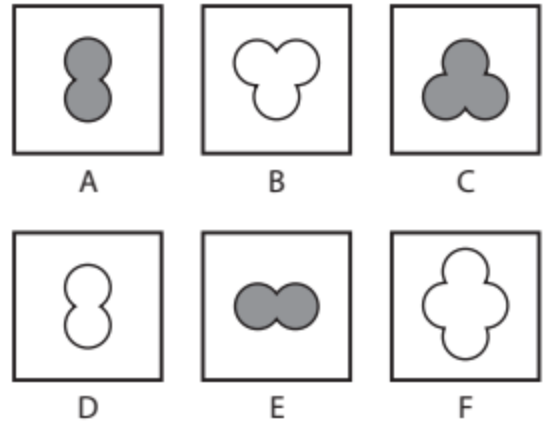
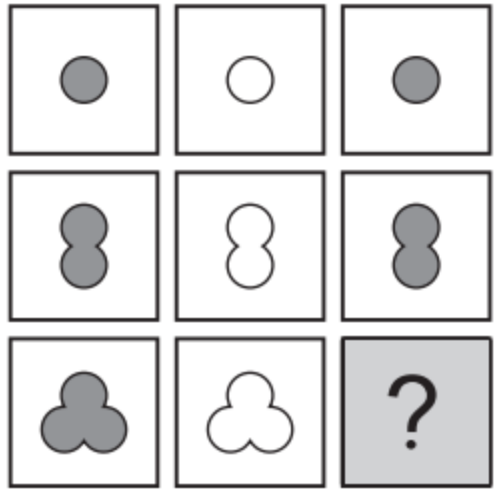
**20** A real giraffe is 4.8m tall. How tall will a model giraffe be?

A	B	C	D	E
15cm	16cm	17cm	18cm	20cm

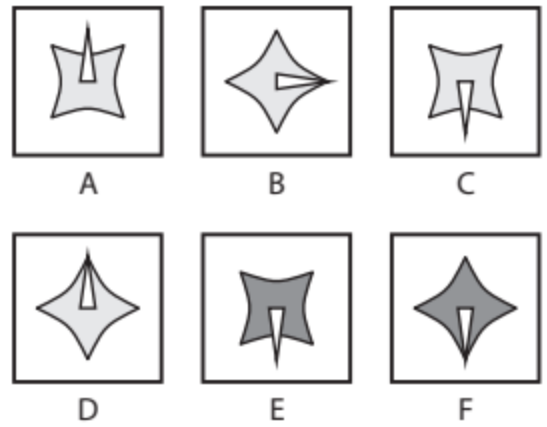
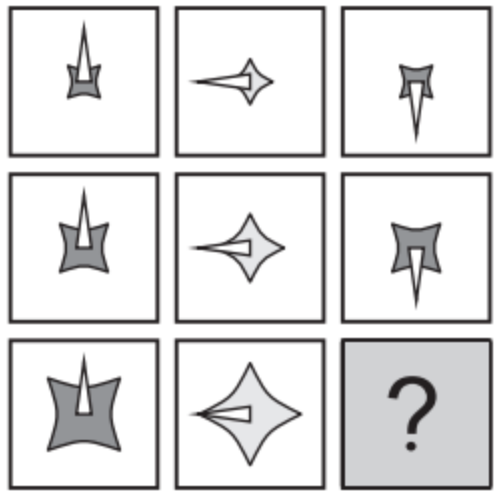


# Non Verbal Reasoning

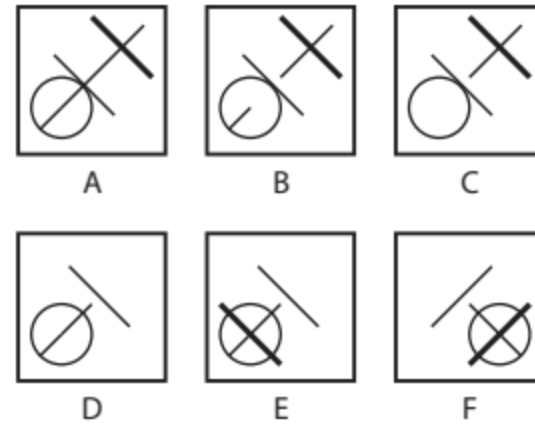
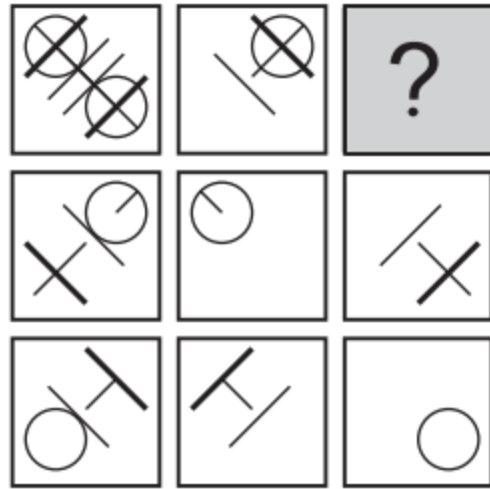
1



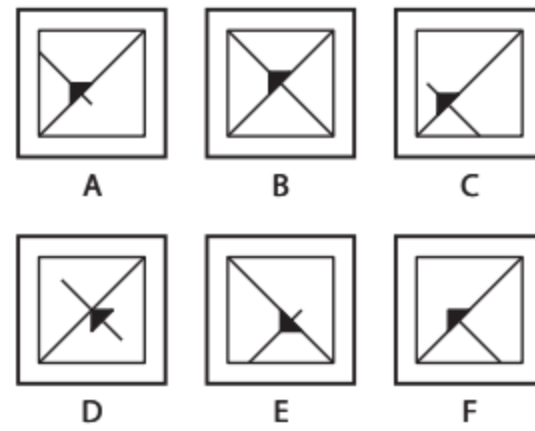
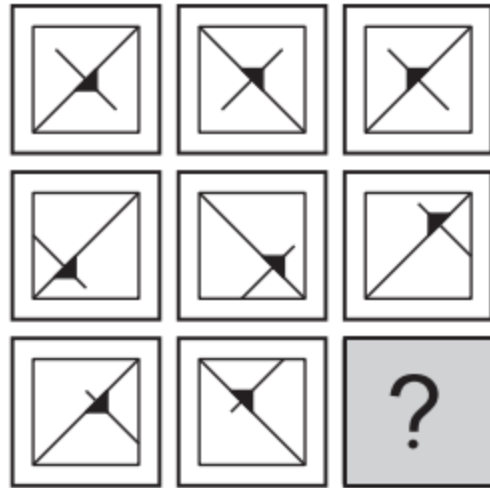
2



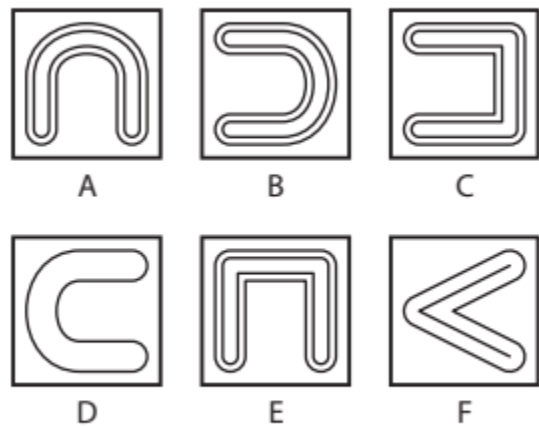
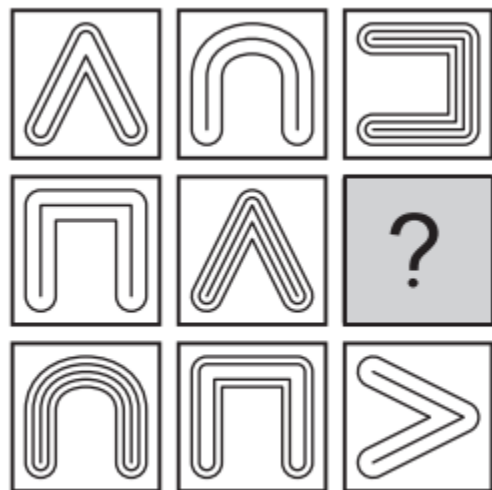
14



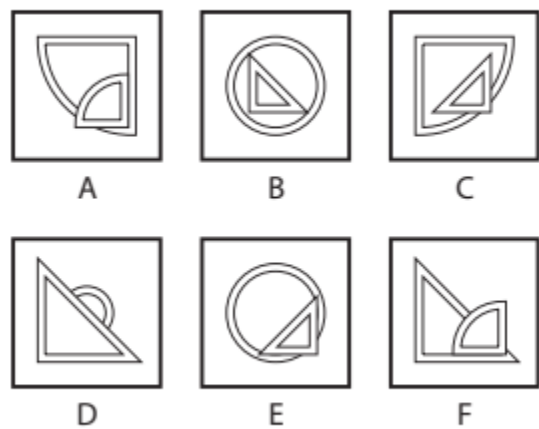
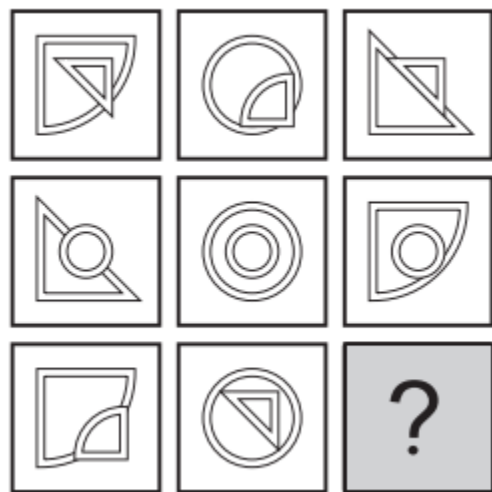
15



19



20



# Word Choice

# Opposite in meaning

1

exhausted

A	B	C	D	E
puzzled	worried	determined	starving	refreshed

---

2

comfort

A	B	C	D	E
dismiss	discharge	distress	disagree	distaste

---

3

polluted

A	B	C	D	E
fast	clean	shiny	grand	safe

---

4

discard

A	B	C	D	E
display	steal	melt	keep	destroy

---

5

disruptive

A	B	C	D	E
friendly	generous	cheerful	lazy	obedient

---

6

grouchy

A	B	C	D	E
calm	pleasant	hostile	delicate	sickly

---

7

subtle

A	B	C	D	E
unusual	obvious	important	friendly	expensive

**16**

strenuous

A	B	C	D	E
crazy	funny	heavy	naughty	easy

---

**17**

monumental

A	B	C	D	E
invisible	inappropriate	infinite	insignificant	ineffective

---

**18**

resourceful

A	B	C	D	E
destructive	unresponsive	extensive	reactive	unimaginative

---

**19**

bliss

A	B	C	D	E
previous	misery	privacy	madness	darkness

---

**20**

detest

A	B	C	D	E
check	belong	weaken	love	bend

---

**21**

obstruct

A	B	C	D	E
hide	treat	assist	empty	find

Any Questions?

