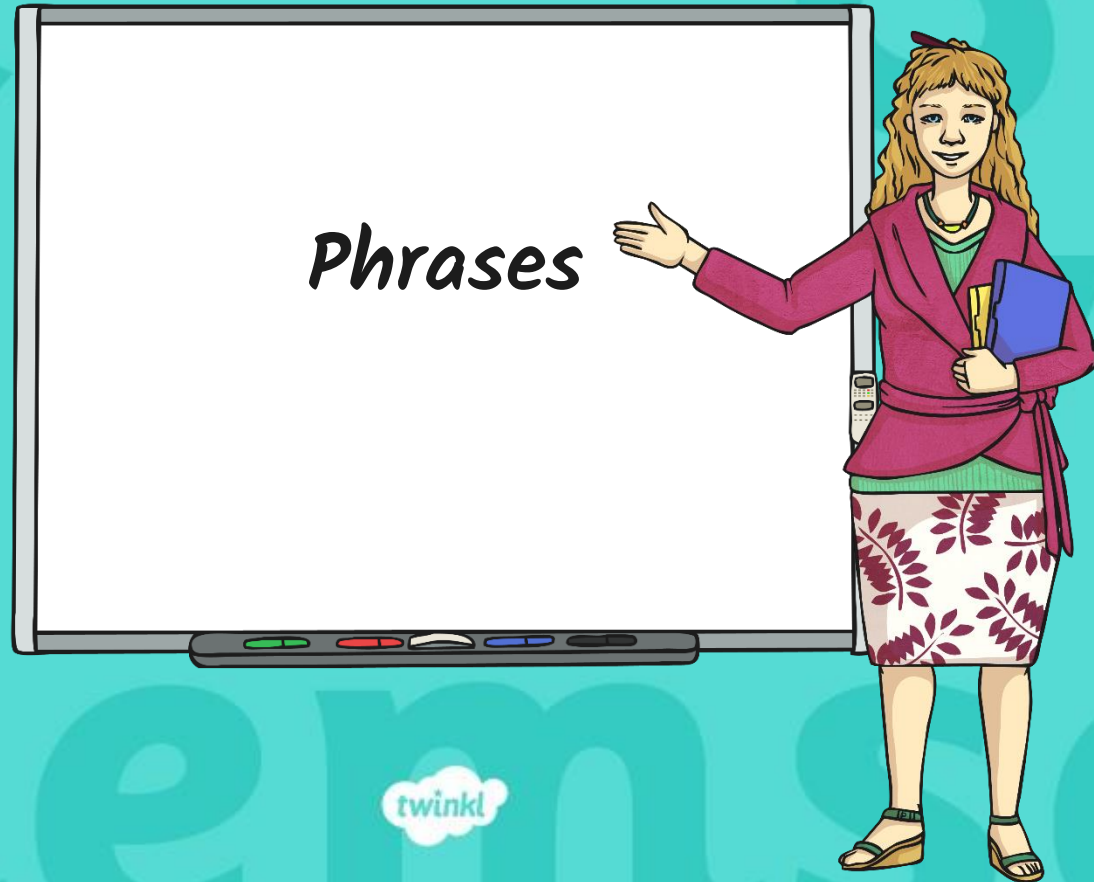


Year 6 Grammar Revision



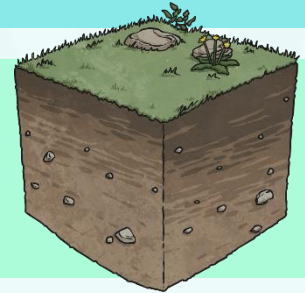
Phrases: The Rules

A **phrase** is a group of words that form **part of a sentence**. A phrase **does not contain a verb**. If there was a verb, it would become a clause. There are **different types** of phrase...

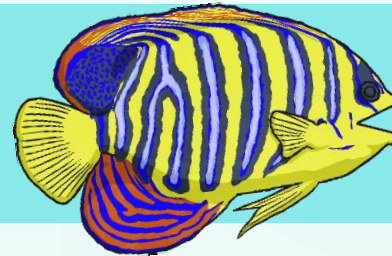
Adverbial phrases, e.g. very quickly



Prepositional phrases, e.g. under the ground



Noun phrases, e.g. striped angel fish



Adverbial Phrases: The Rules

Adverbial phrases are used like adverbs to give **more information** about a verb, an adjective or other adverbs. They are sometimes just called **adverbials**. They tell us **how? where? when? why? or how often?**

Garan rode his bike **like an expert**.

Garan rode his bike **with great speed**.

Down the street, Garan rode his bike.



Noun Phrases: The Rules

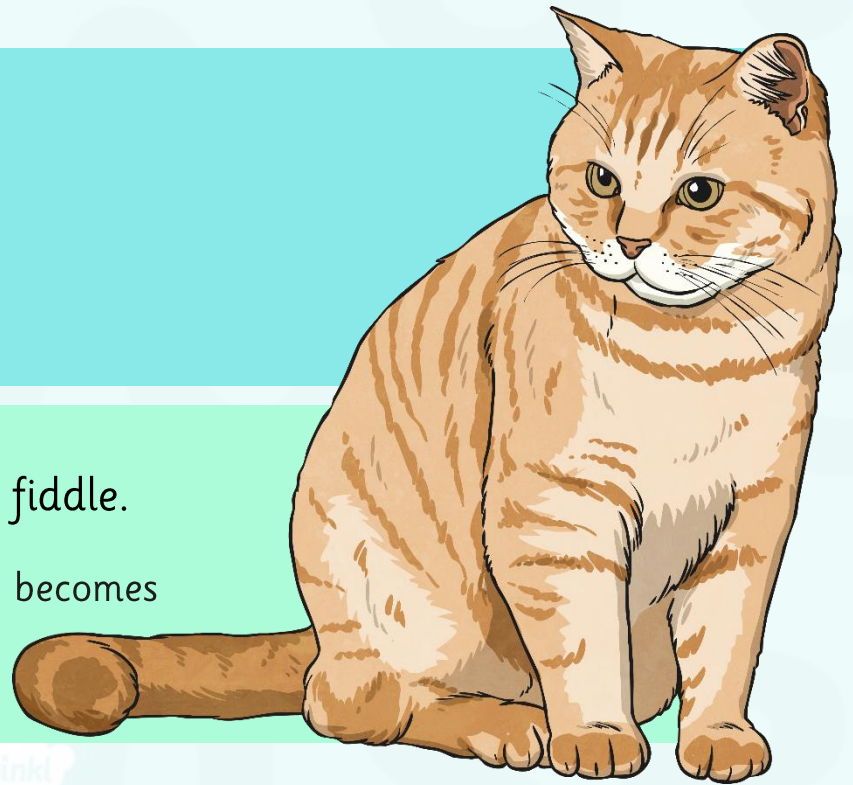
A **noun phrase** is a group of words that functions as a noun in a sentence. They help to **identify** the noun. When **adjectives** are added to a noun phrase, we call it an **expanded noun phrase**.

The cat played a fiddle.

‘The cat’ is a simple noun phrase.

The intelligent, ginger cat played the fiddle.

By adding adjectives in front of the noun, it becomes an expanded noun phrase.

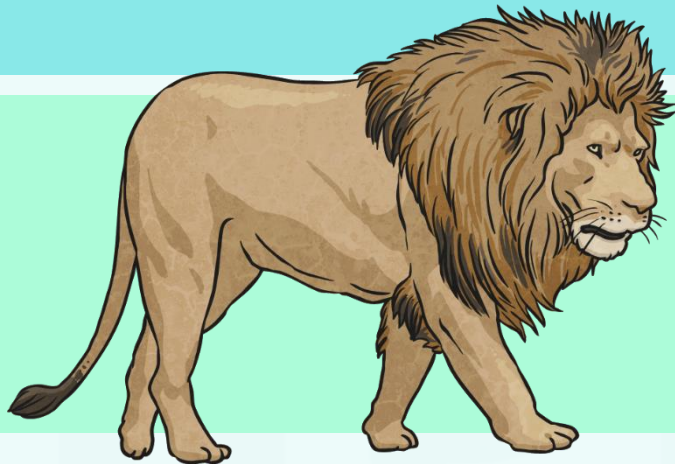
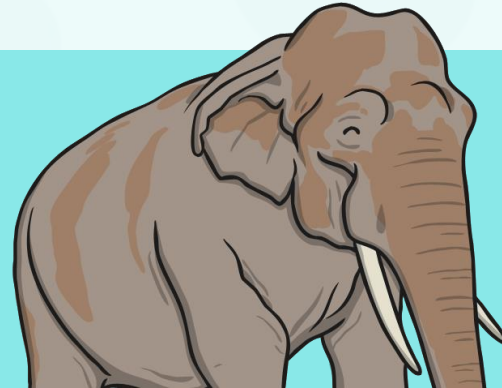


Prepositional Phrases: The Rules

Prepositional phrases are used like **adverbs** or **adjectives** to give more information about a **verb** or **noun**. Prepositional phrases **begin with a preposition** and are **followed by a noun, pronoun or noun phrase**.

The elephant balances **on the ball**.

Here the prepositional phrase gives more information about the verb 'balances'.



The lion in **the circus** performs tricks.

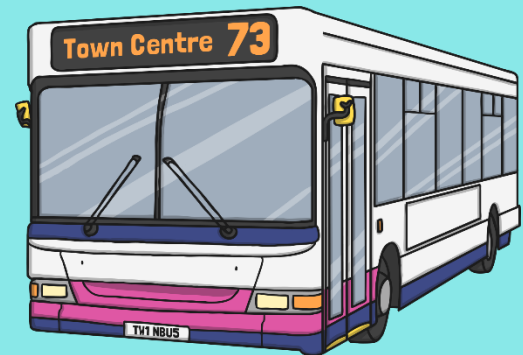
Here the prepositional phrase gives more information about the noun 'lion'.

Phrases: The Tricky Bits

Identifying different types of phrases can become very confusing as there is often an overlap between the terms we use, e.g.

The bus leaves **in five minutes**.

‘in five minutes’ is an **adverbial** as it acts as an adverb and tells us when the bus will leave. It is also a prepositional phrase as it adds more information about the verb ‘leaves’.



The moss **on the stones** was dangerous.

‘on the stones’ is a prepositional phrase that describes the position of the moss but is also has a simple noun phrase within it ‘the stones’.

Phrases – Quiz Question 1

Click the box that shows how the highlighted words are used in the sentence.

Susan is the girl **in the yellow dress**.



a relative clause

a fronted adverbial

a prepositional phrase

Phrases – Quiz Question 2

Rewrite this sentence with the adverbial phrase used as a fronted adverbial. Add a comma if necessary.

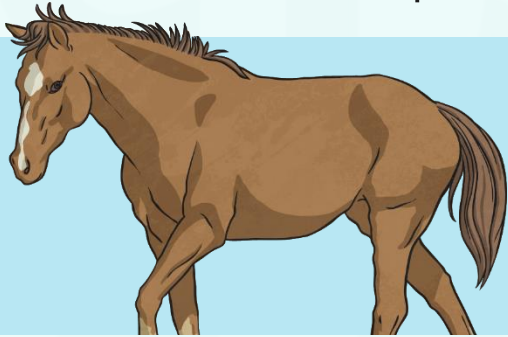
Holly starts judo classes
tomorrow morning.



Tomorrow morning, Holly starts judo classes.

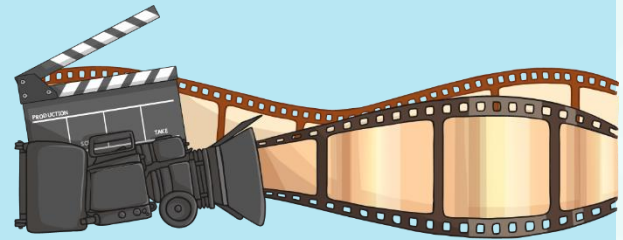
Phrases – Quiz Question 3

Find the expanded noun phrases in these sentences:



The **last remaining horse** won the race.

They don't like **boring, old movies**.



The **cool, gentle breeze** swayed the trees.

*Are you feeling
confident with
phrases?*

